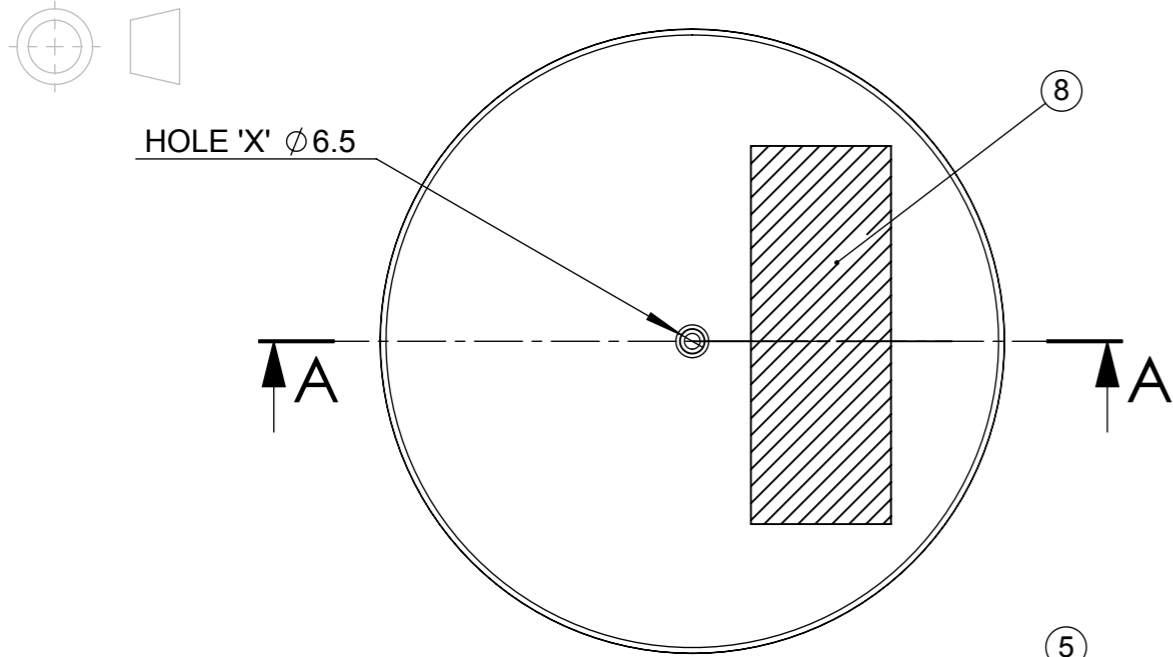
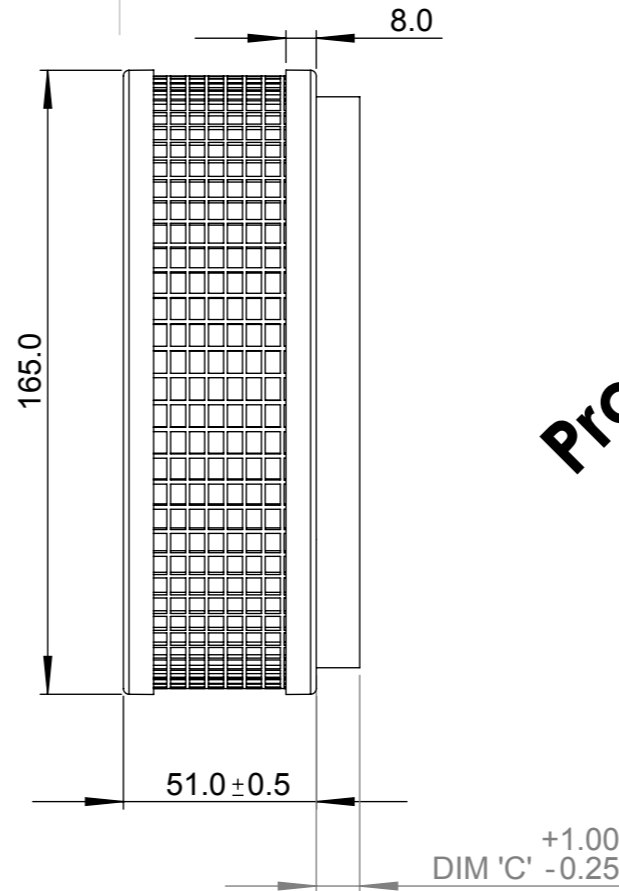
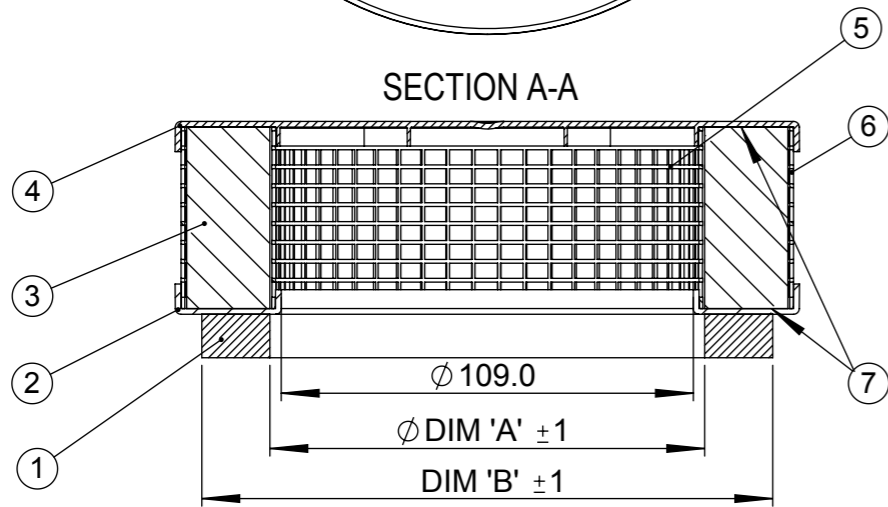


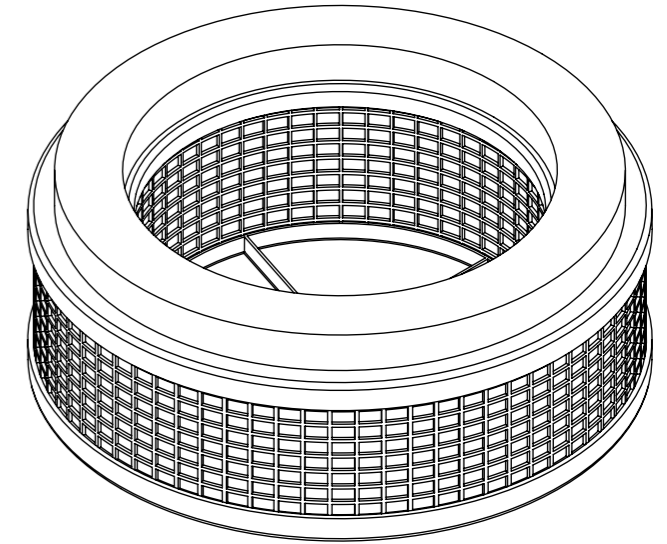
THIRD ANGLE PROJECTION



SECTION A-A



Production



- NOTES:-
- 1/ COMPONENTS TO BE FREE FROM FLASH, BURRS AND SINK MARKS
 - 2/ GENERAL FORM TO BE MANUFACTURED FROM NUMATIC INTERNATIONAL CAD SURFACE DATA
 - 3/ GATE POSITION MUST NOT INTERFERE WITH MATING PARTS DURING NORMAL OPERATION, OR AFFECT VISUAL QUALITY OF PART
 - 4/ FINISH: COMMERCIAL POLISH [REMOVE ALL MACHINING MARKS]

GASKET SIZE & PROCESSING DETAIL					
ITEM NUMBER	DESCRIPTION	DIM 'A'	DIM 'B'	DIM 'C'	HOLE 'X'
901647	HZ	115	151	11.5	NO
901649	MFQ	127	163	15	NO
901650	PPH	127	163	15	YES
901648	HAS / ATEX	115	151	11.5	NO

FILTER SPECIFICATION	
FILTER MEDIA AREA (m ²)	0.32
FILTER EFFICIENCY (EN1822) Ref- DOC-23790 (IBR TEST)	H13
FLOW RATE (L/s)	33
PRESSURE DROP (kPa)	1.60

MATERIAL TABLE					
ITEM NUMBER	DESCRIPTION	901647	901649	901650	901648
1	*NEOPRENE GASKET	NEOPRENE M-SEAL 00013 50 SHORE 00 +5	NEOPRENE M-SEAL 00013 50 SHORE 00 +5	NEOPRENE M-SEAL 00013 50 SHORE 00 +5	NEOPRENE M-SEAL 00013 50 SHORE 00 +5
2	BOTTOM END PLATE	>ABS< M-ABSX -00006	>ABS< M-ABSX -00006	>ABS< M-ABSX -00006	CONDUCTIVE >ABS< M-ABSX-00008
3	**PLEAT PACK	PAPE-00041	PAPE-00041	PAPE-00041	PAPE-00041
4	TOP END PLATE	>ABS< M-ABSX -00006	>ABS< M-ABSX -00006	>ABS< M-ABSX -00006	CONDUCTIVE >ABS< M-ABSX-00008
5	***INNER MESH	M-MESH-00024	M-MESH-00024	M-MESH-00024	M-MESH-00024
6	***OUTER MESH	M-MESH-00024	M-MESH-00024	M-MESH-00024	GALVANISED STEEL
7	****POTTING COMPOUND	65 SHORE PU M-ADDI-00023 NEUTRAL/CLEAR	65 SHORE PU M-ADDI-00023 NEUTRAL/CLEAR	65 SHORE PU M-ADDI-00023 NEUTRAL/CLEAR	65 SHORE PU M-ADDI-00023 NEUTRAL/CLEAR
8	FILTER IDENTIFICATION LABEL	SEE DRW-18878			
APPROX FILTER WEIGHT(Grms)		200	200	200	215

NUMATIC DATA SHEET REF:

- * FOR NEOPRENE GASKET - SEE DOC-23789
- ** FOR PLEAT PACK MEDIA, SEE DOC-23788
- *** >PP> MESH - SUPPLIER REF- DOC-24559
- **** FOR PU POTTING COMPOUND SEE- DOC-24560

Numatic INTERNATIONAL LTD MILLFIELD ROAD, CHARD, SOMERSET TA20 2GB ENGLAND

20.0 THE EXAMPLE SHOWN DETAILS THE METHOD USED FOR IDENTIFYING CRITICAL (INSPECTION) DIMENSIONS WHERE APPLICABLE

TOLERANCES:- LINEAR: 0 DECIMAL PLACES = +/- 1.0mm
 1 DECIMAL PLACE = +/- 0.25mm
 2 DECIMAL PLACES = +/- 0.05mm
 ANGULAR:- +/- 0.5 DEGREE

Any Component that will be touched by the operator must be PAH tested. This article must not contain greater than 0.1% w/w of substances that are on the candidate list for Annex XIV of the REACH regulations All components must be ROHS compliant.

TOOL NUMBER: _____

WEIGHT: SEE TABLE

TITLE:- FILTER CARTRIDGE (H13)		
DIMENSIONS IN MILLIMETERS	MATERIAL:- SEE TABLE	ITEM No(s):- SEE TABLE
NOT TO SCALE	FINISH:- _____	DRG No:- DRW-18001

A20 DIMENSION 'C' TOLERANCE CHANGED TO +1.00mm -0.25mm

REVISION: CHANGE DETAIL:

DRAWN: APPD: DATE:

Ian Bevis 31/07/2017

THIS DRAWING IS COPYRIGHT AND IS THE PROPERTY OF NUMATIC INTERNATIONAL LTD. AND MUST NOT BE USED WITHOUT THEIR KNOWLEDGE NOR COMMUNICATED TO ANY PERSON OR COMPANY.

PRINT SIZE

A3